

EDUROAM WIRELESS CONNECTION CONFIGURATION GUIDE FOR WINDOWS 7

Users wanting to access **eduroam** wireless network resources must enter their username and password.

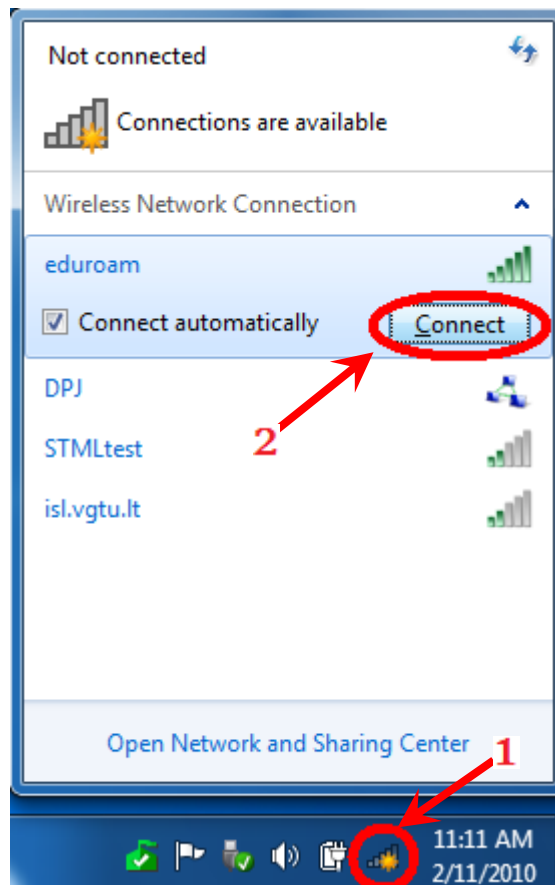
The user name is [username @vgtu.lt](#)

The password is **e-service password**.

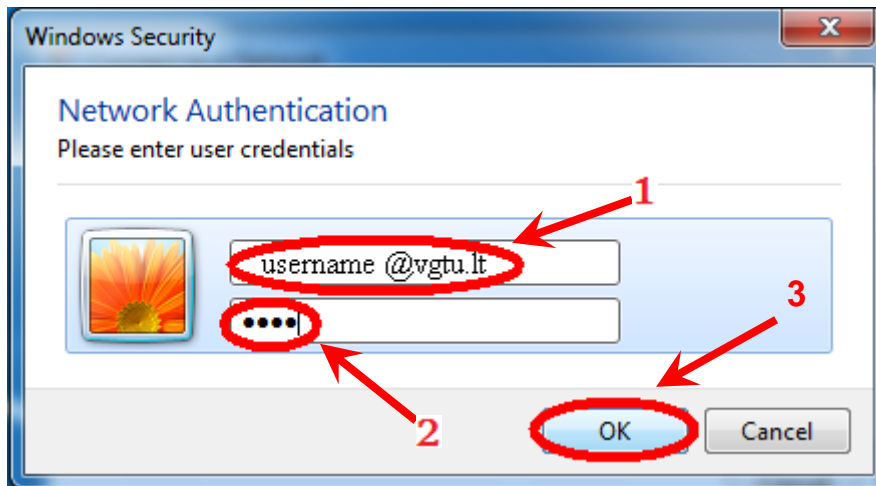
- For VGTU employees – the **username** is the same as the one for connecting to the VGTU **information system** (statements or personal orders).
- For VGTU students – the **username** is the number of the student identification card.

User Configuration

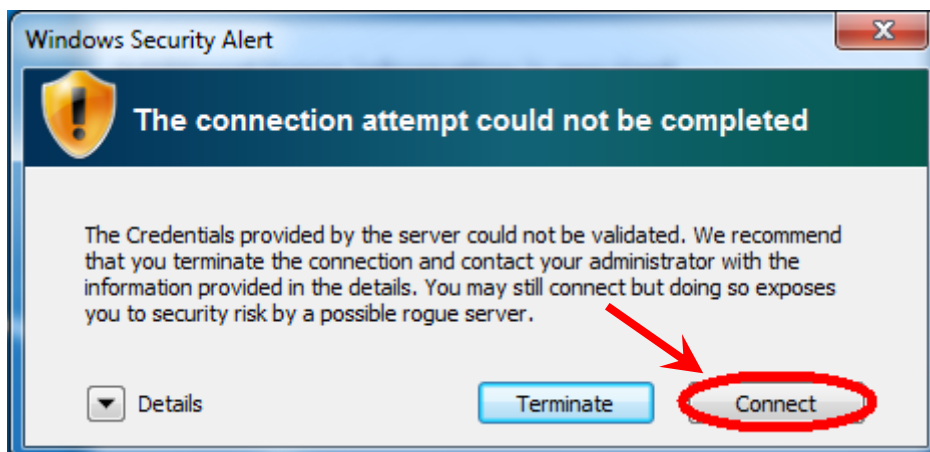
1. In the Taskbar, select the **Wireless Network Connection**, in the opened window, select **eduroam** and click **Connect** button.



2. In the **Windows Security** window enter your **username** ending in **@vgtu.lt** and **password** and then click **OK**.



3. When the **Windows Security Alert** window pops up, click the button **Connect**.



4. If your laptop has unique wireless adapter configuration software or if you are unable to configure your laptop, please seek help in room SC L313 or email eduroam@vgtu.lt.

5. This configuration guide can be found here:

http://www.vgtu.lt/upload/ip_db/eduroam_7_en.pdf

6. All users of the EDUROAM wireless network must obey the LITNET and VGTU computer network user rules. **It is strictly forbidden to share copyrighted material (movies, music, computer games and software) or use p2p software (Torrent, eMule, eDonke, etc.).** You can acquaint yourself with the rules using the links below. A user disobeying the rules will be blocked and the head of the department or the dean will be informed of this fact.

7. LITNET computer network user rules (Appendix 1)

http://www.litnet.lt/index.php?option=com_content&task=view&id=17&Itemid=12

8. VGTU computer network user rules (Appendix 2)

<http://www.vgtu.lt/upload/sc/priedai.pdf>